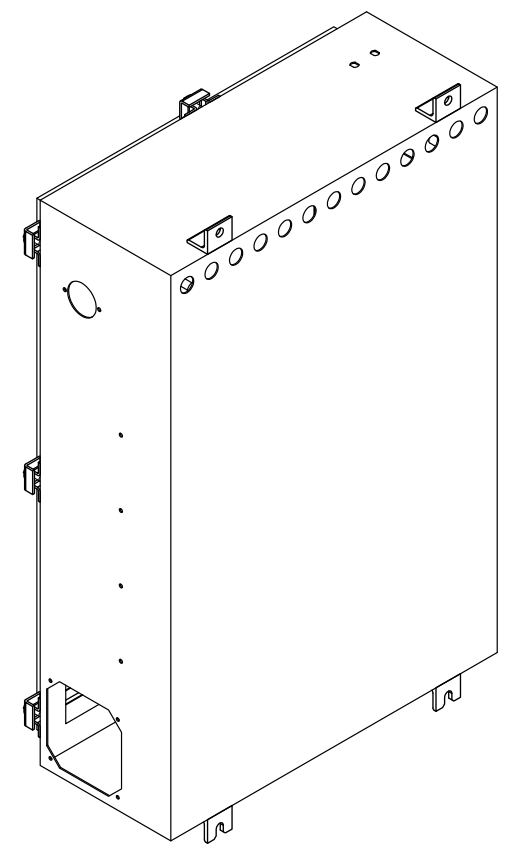


-501 ASSY  
FRONT VIEW



-501 ASSY  
BACK VIEW

- 7 SILKSCREEN WHITE USING M355300178-001.
- 6 SILKSCREEN WHITE USING M355300178-002.
- 5 MASK INDICATED AREAS PRIOR TO PRIME AND PAINT TO EXPOSE ZINC PLATING AS ELECTRICAL CONTACT SURFACES.
- 4 FINISH:  
DEGREASE ALL OUTSIDE SURFACES, GRIT BLAST CLEANED SURFACES TO SPC #10 NEAR WHITE BLAST. BLOW FREE OF ALL DUST, CLEAN AND DRY PRIOR TO APPLICATION OF FINISH. APPLY IN ACCORDANCE WITH MANUFACTURER'S SPECIFICATIONS PROLINE ZINC #221, (3 TO 4 MILS DRY FILM THICKNESS). APPLY PROLINE #4001 WHITE EPOXY PRIMER (DRY FILM THICKNESS 5 TO 6 MILS). OVERCOAT TIME TO BE 4 HOURS. FINAL COAT TO BE PROLINE #4800 POLYURETHANE SEMIGLOSS BLUE. COLOR TO BE PER FED STD 595, PAINT CHIP #25102, (DRY FILM THICKNESS 1.5 TO 2 MILS). OVERSPRAY PERMITTED ON ADJACENT SURFACES. FINISH TO BE MEDIUM TEXTURE.
- 3 IDENTIFY  
????
- 2. REMOVE ALL BURRS AND SHARP EDGES.
- 1. INTERPRET DRAWING PER BEST COMMERCIAL PRACTICES.

- 13 SCHLEGEL SYSTEMS  
ROCHESTER, NY 14623  
(716) 427-7200  
EMI GASKET 1/4" X 1/2" PROFILE 5725,  
C COATING, ADHESIVE BACK.  
NOTE: INSTALL GASKET AFTER  
FINISH APPLICATION.
- 12 SILKSCREEN WHITE USING  
M357500033-001.
- 11 SILKSCREEN WHITE USING  
M357500033-002.
- 10 CONSTRUCTION:  
ALL CORNERS - OPTIONAL CONSTRUCTION, BUTT JOINT WITH SQUARE GROOVE WELD OUTSIDE, GROUND SMOOTH AND FLUSH WITH ADJACENT SURFACES, WITH SKIP FILLET WELD INSIDE, AS SHOWN ON FIELD OF DRAWING, OR FORMED CORNERS WITH MINIMUM RADIUS BEND. CORNERS MAY BE COMBINATION OF ANY OR ALL OF THE ABOVE CONSTRUCTION JOINTS.  
ALL CORNERS MUST HAVE SMOOTH APPEARANCE AND MUST BE FREE FROM SLAG, VOIDS, RIDGES AND BEADS. ALL WELD DISCOLORATION MUST BE REMOVED  
WELD JOINTS MUST BE LEAK RESISTANT, CONTINUOUS WELDS FOR ALL OUTSIDE CLOSURE JOINTS.
- 9 MAY BE MADE FROM McMASTER-CARR PART NO 15665A283 CONTINUOUS HINGE OR EQUIVALENT.
- 8 THIS ITEM IS SIMILAR TO HOFFMAN PART NO. A-302008-LP NEMA 12 SINGLE DOOR ENCLOSURE

QTY	ITEM	SIZE	DRAWING/PART NUMBER	CAGE CODE	NOMENCLATURE / DESCRIPTION / MATERIAL
	1	14			-014 M/F EMI GASKET, P/N E2519T00000
	5	13			-001 WASHER, LOCK, 1/4, STL, PLTD
	5	12			-001 WASHER, FLAT, 1/4, STL, PLTD
	5	11			-001 SCREW, HEX HD, 1/4-20 X 3/4 LG, STL, PLTS
	5	10			-001 SHEET, .120 THK, STL, ASTM A366
	5	9			-009 SHEET, .105 THK, STL, ASTM A366
	2	8			-008 SHEET, .030 THK, ASTM A366
	2	7			-007 SHEET, .030 THK, ASTM A366
	2	6			-006 ANGLE, 1 1/4 X 1 1/4 X 3/16, STL, ASTM A36
	2	5			-005 ANGLE, 1 1/4 X 1 1/4 X 3/16, STL, ASTM A36
	4	4			-004 ROD, .75 DIA., STL 1018
	1	3			-003 MAKE FROM HINGE, .06 THK X 3.00 W, STL
	1	2			-002 SHEET, .075 THK, STL, ASTM A366
	1	1			-001 SHEET, .06 THK, STL ASTM A366
					-501 EMI ENCLOSURE, WELDED - SNS-2

QUANTITY REQ'D PER DASH NO.		PARTS LIST	
Required None		<p><b>PROPRIETARY INFORMATION</b></p> <p>NOT TO BE COPIED, USED, OR DISCLOSED WITHOUT WRITTEN PERMISSION FROM</p> <p>CAD/CAM DRAWING DO NOT MANUALLY REVISE OR UPDATE</p>	
<p>DO NOT SCALE DRAWING UNLESS OTHERWISE SPECIFIED DIMENSIONS ARE IN INCHES TOLERANCES</p> <p>.x ± .1    .xx ± .03    .xxx ± .010</p> <p>HOLE DIA UP TO .500 ± .002</p> <p>HOLE DIA ABOVE .500 ± .003</p> <p>ANGLES ± 0° 30'</p> <p>MACHINED SURFACES</p> <p>125</p>		<p>TITLE</p> <p><b>ELECTRONICS ENCLOSURE, WATER CART, SNS 2</b></p>	
<p>PROJECT MANAGER</p> <p>PROJECT ENGINEER</p> <p>APPROVED</p> <p>APPROVED SAFETY</p> <p>APPROVED</p> <p>CHECKED BY</p> <p>DRAWN BY E. GALICKI 05/10/02</p>		<p>SIZE FSCM DRAWING NUMBER</p> <p><b>D</b> XXXXXXXXXXXX</p> <p>SCALE 1/4 RELEASE DATE SHEET 1 OF 5</p>	

8

7

6

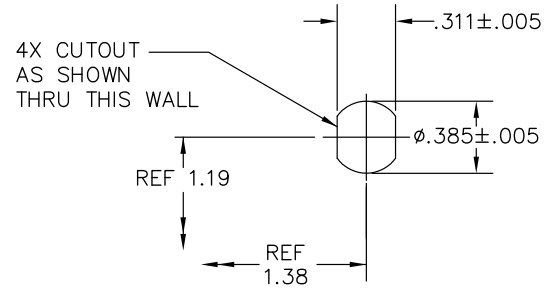
5

4

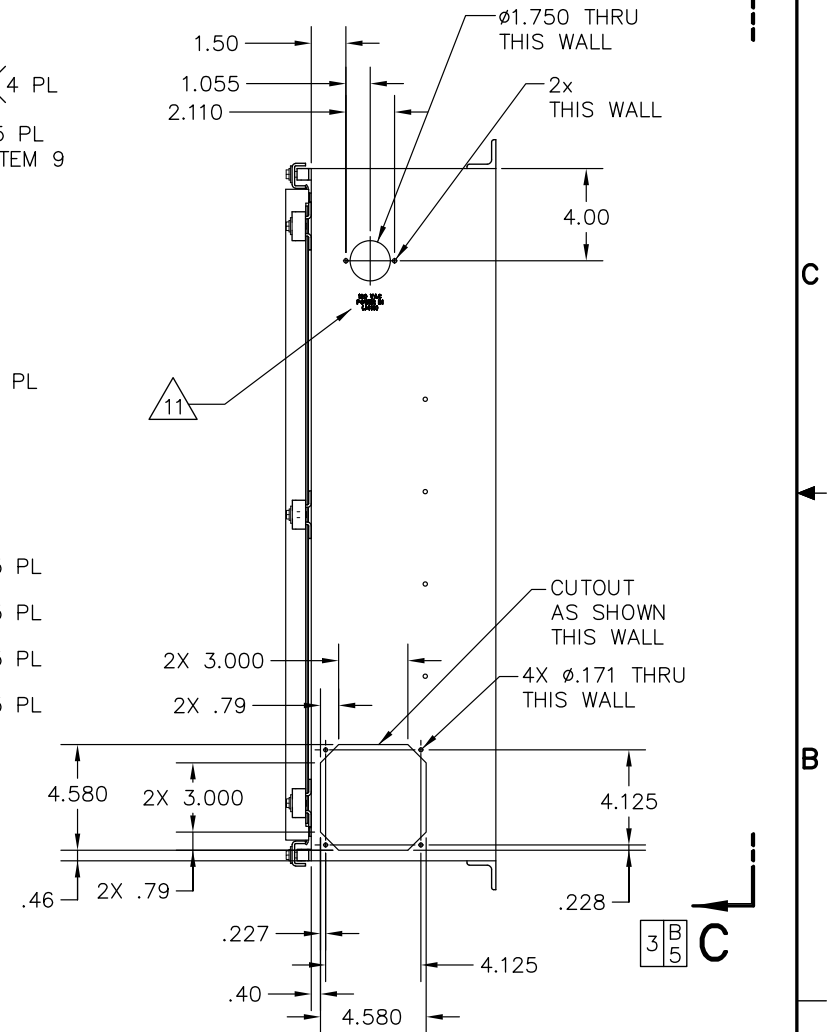
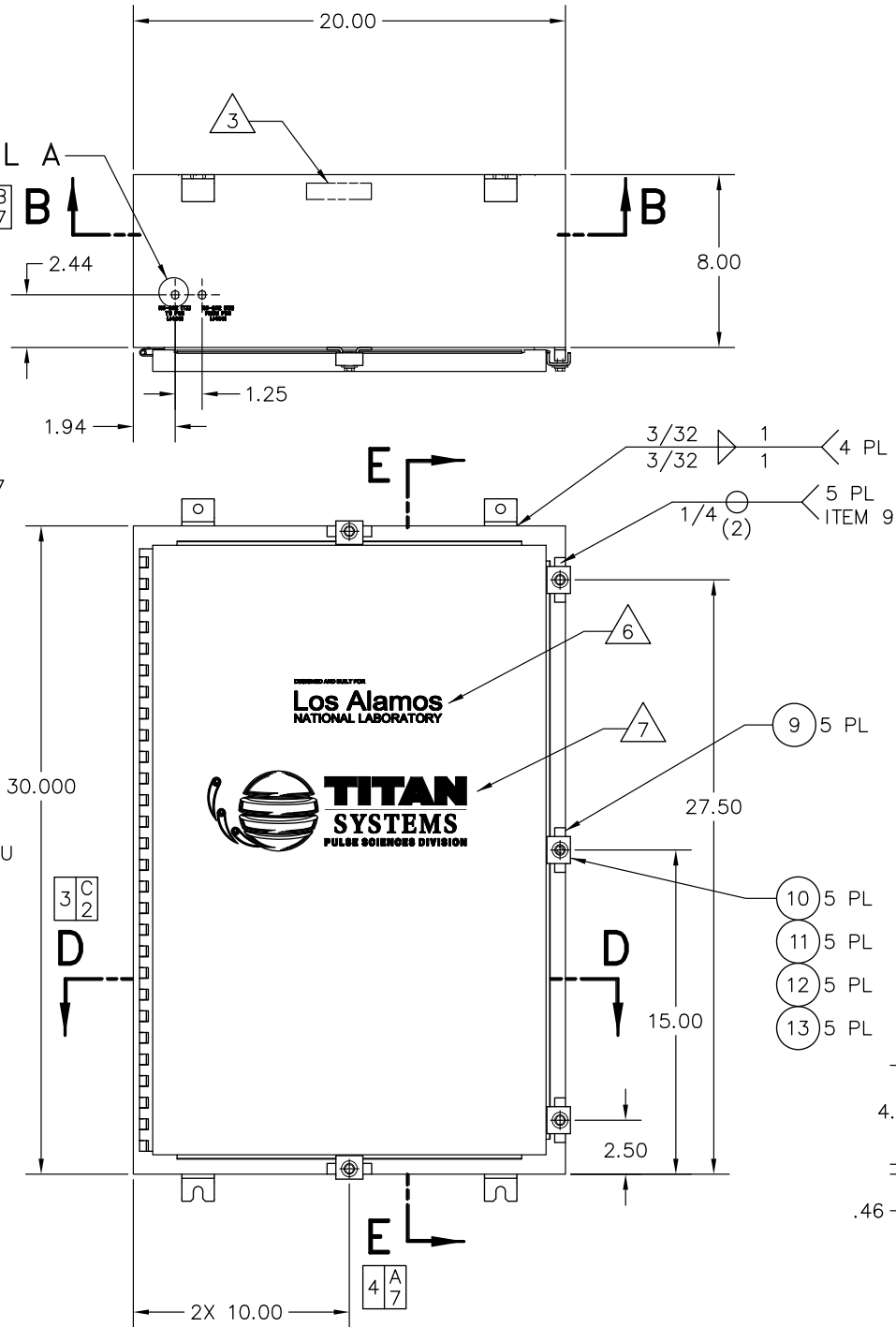
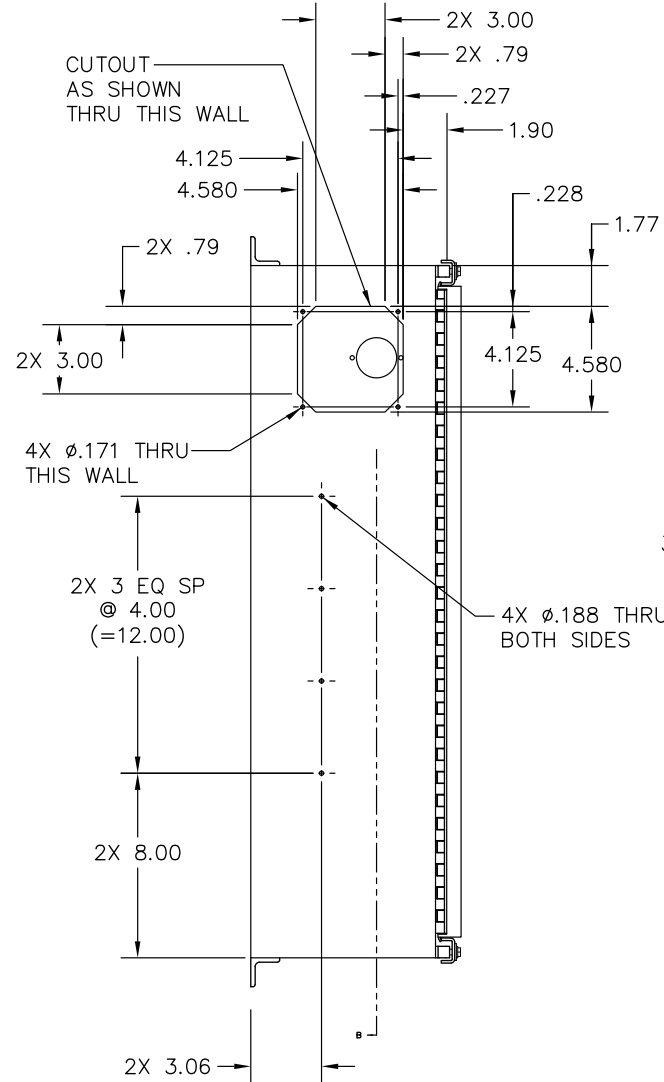
3

1

Z		XXXXXXXXXX		REVISIONS	
ZONE	LTR	DESCRIPTION	DATE	APPROVED	
SEE SHEET 1					



**DETAIL A**  
SCALE: 2/1  
2 PLACES



SEE SHEET 1 FOR NOTES.

SIZE	CAGE CODE	DRAWING NUMBER	REV LTR
D		XXXXXXXXXX	-
SCALE	RELEASE DATE	SHEET	
1/4		2	

8

7

6

5

4

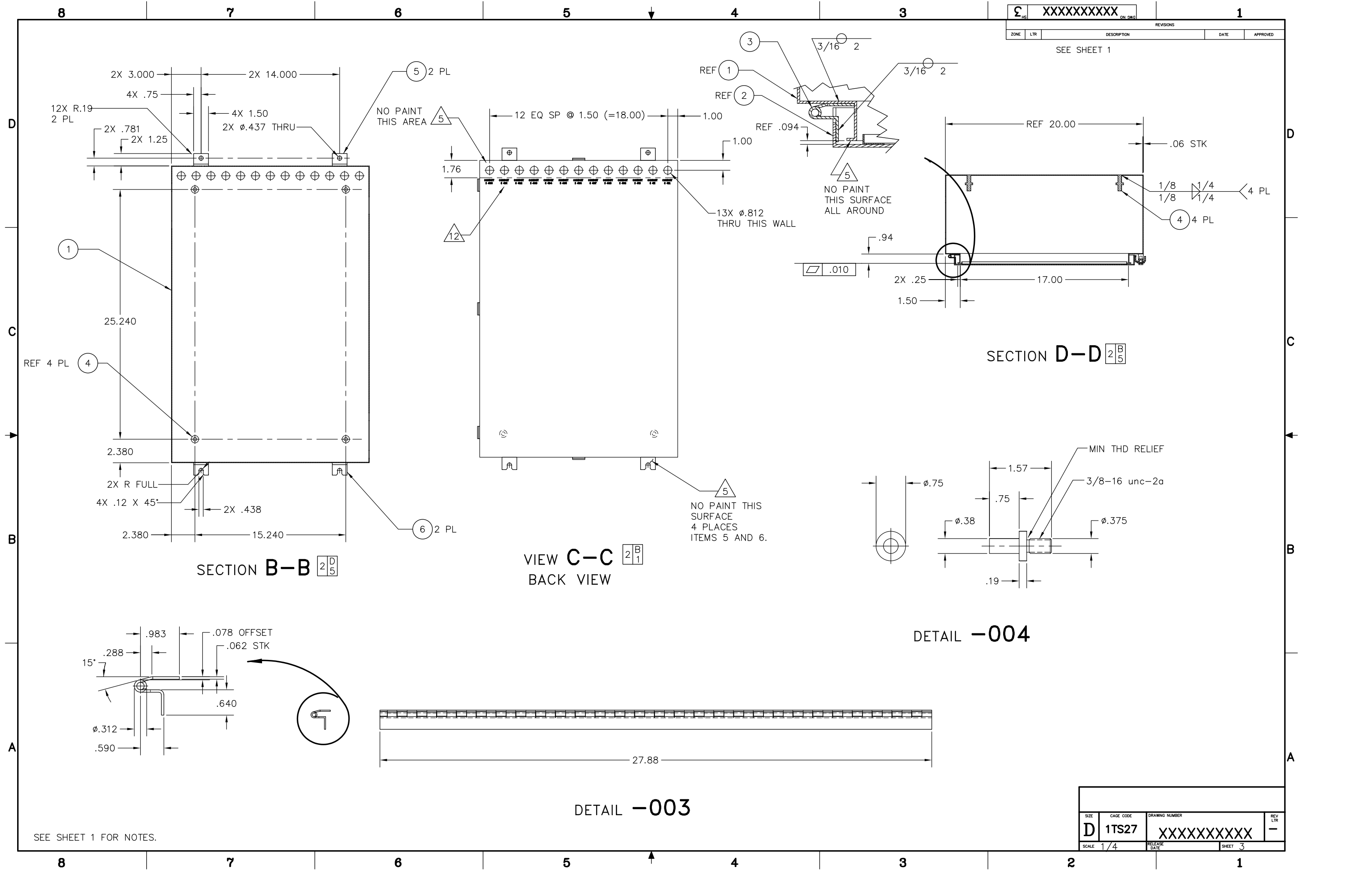
3

2

1

XXXXXXXXXX		REVISIONS	DATE	APPROVED
ZONE	LTR	DESCRIPTION		

SEE SHEET 1



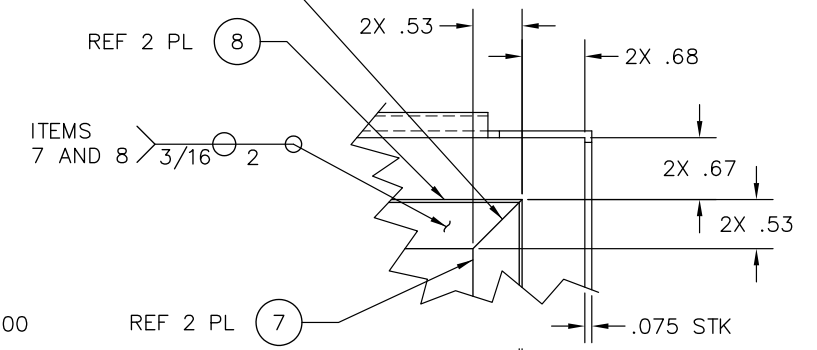
SEE SHEET 1 FOR NOTES.

SIZE	CAGE CODE	DRAWING NUMBER	REV
D	1TS27	XXXXXXXXXX	-
SCALE	RELEASE DATE	SHEET	
1/4		3	

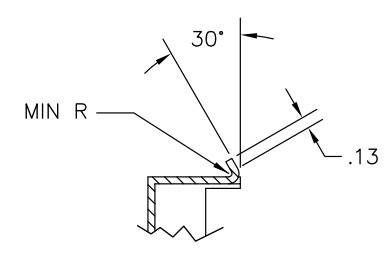
XXXXXXXXXX		REVISIONS	DATE	APPROVED
ZONE	LTR	DESCRIPTION		

SEE SHEET 1

CORNER OPTIONAL  
MITER NOTCH  
AND FOLD OR  
BUTT JOINT



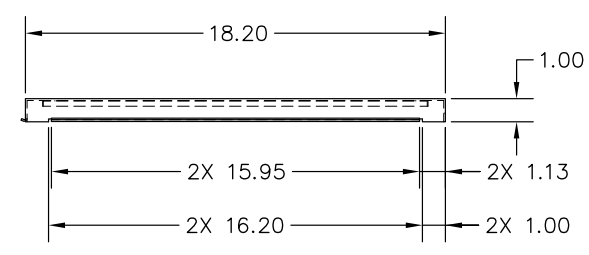
INSIDE CORNER EDGES  
ALL AROUND ARE TO  
BE PAINT/NO PAINT  
BOUNDARY.  
ALL OUTSIDE SURFACES  
INCLUDING THIS EDGE  
ARE TO BE PAINTED,  
NO PAINT INSIDE THIS  
CORNER ALL AROUND.



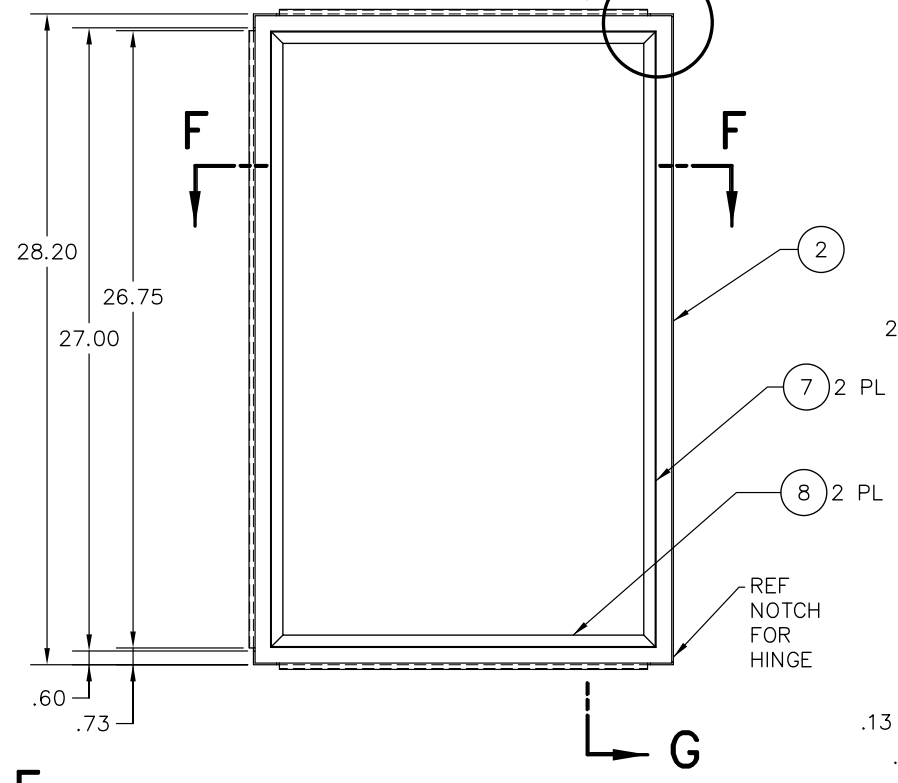
**VIEW G**  
SCALE: 1/1  
TYP 3 PLACES



**SECTION F-F**

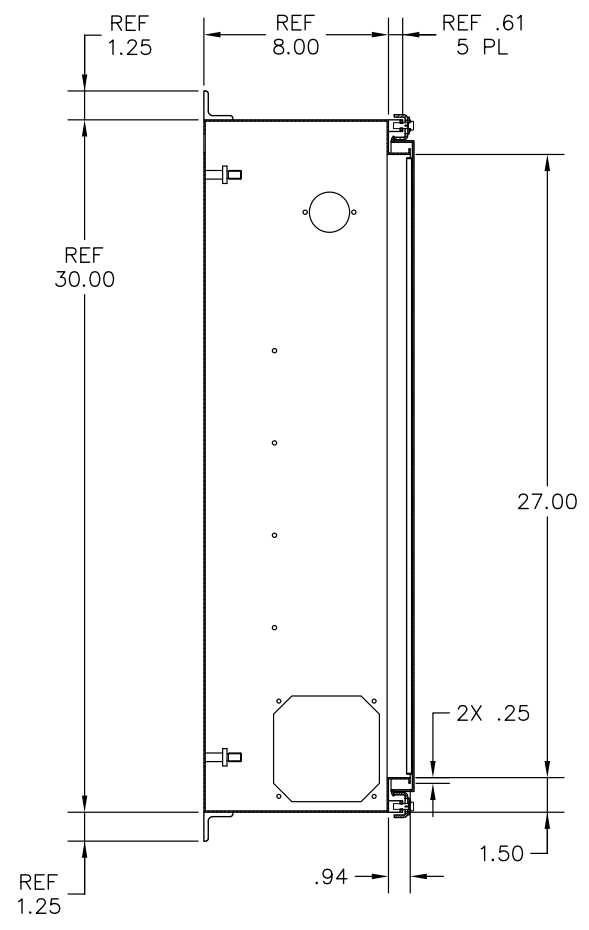


SEE VIEW G

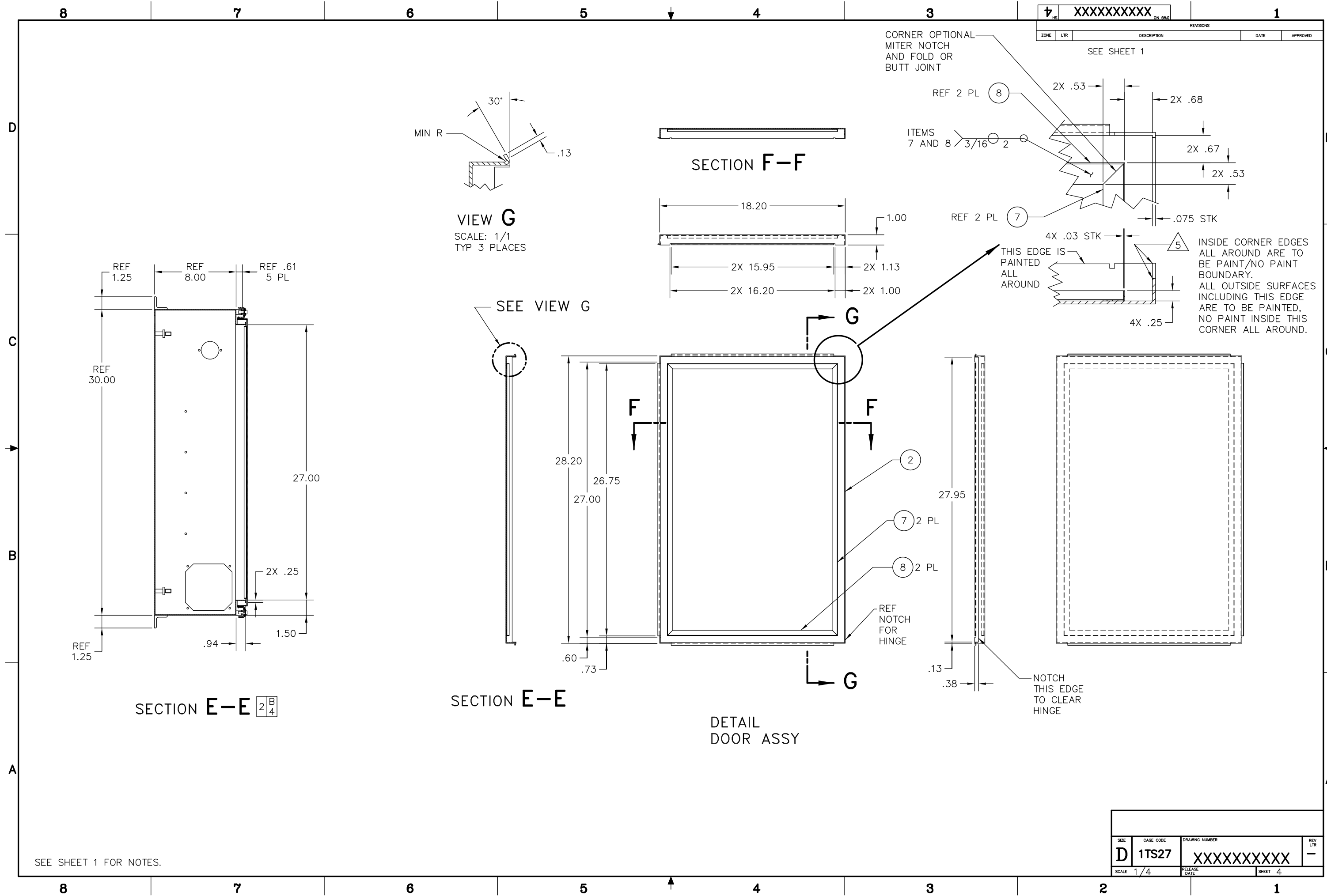


**SECTION E-E**

**DETAIL DOOR ASSY**



**SECTION E-E**



SEE SHEET 1 FOR NOTES.

SIZE <b>D</b>	CAGE CODE <b>1TS27</b>	DRAWING NUMBER <b>XXXXXXXXXX</b>	REV LTR <b>-</b>
SCALE 1/4	RELEASE DATE	SHEET 4	

8

7

6

5

4

3

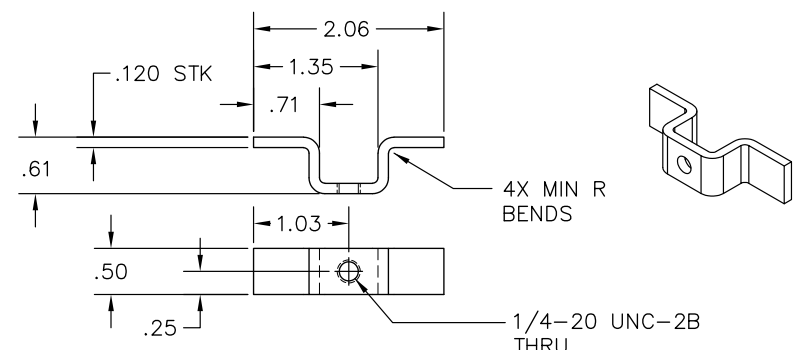
1

G		XXXXXXXXXX		REVISIONS	
ZONE	LTR	DESCRIPTION	DATE	APPROVED	

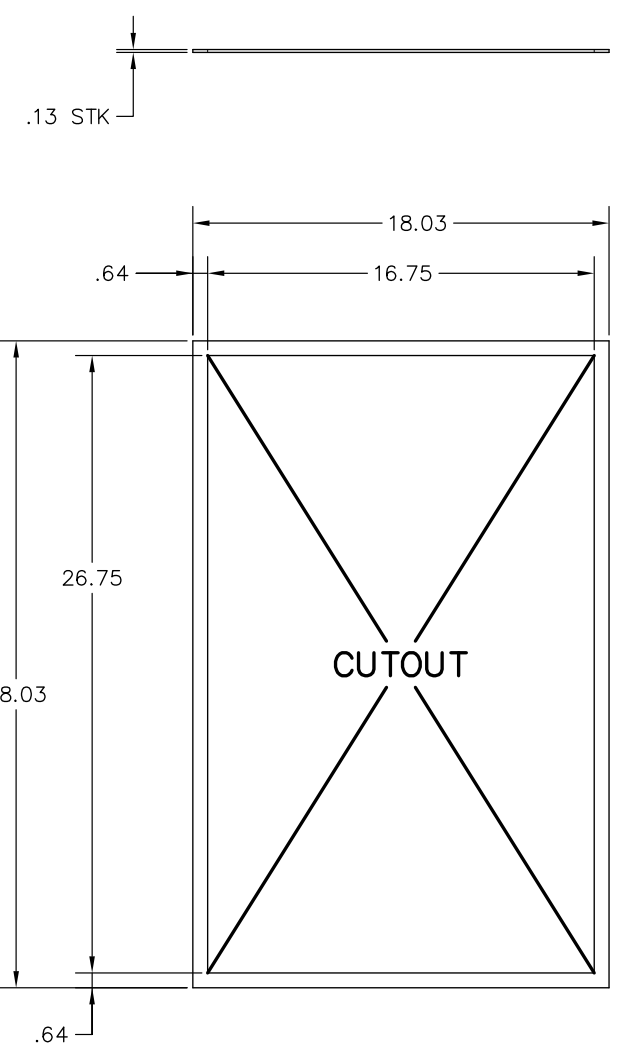
SEE SHEET 1

D

D



DETAIL -009  
SCALE: 4/1

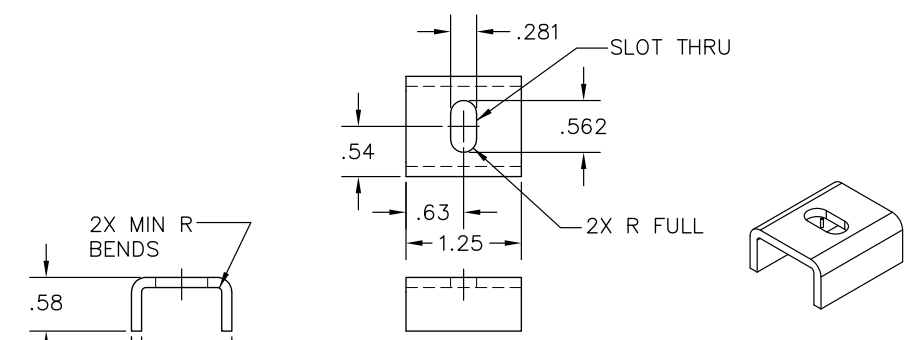


C

C

B

B



DETAIL -010  
SCALE: 4/1

A

A

SEE SHEET 1 FOR NOTES.

SIZE	CAGE CODE	DRAWING NUMBER	REV LTR
D	1TS27	XXXXXXXXXX	-
SCALE	RELEASE DATE	SHEET	
1/4		5	

8

7

6

5

4

3

2

1

1