

8

7

6

5

4

3

DWG. NO.

DWGNO. SH 6 REV-UPR

1

NOTES: UNLESS OTHERWISE SPECIFIED

1. APPLICABLE STANDARDS/SPECIFICATIONS:  
 ANSI Y14.5M-1982 DIMENSIONS AND TOLERANCES.  
 ANSI Y14.100 ENGINEERING DRAWING PRACTICES.  
 MIL-STD-12 ABBREVIATIONS.

2. REMOVE ALL BURRS AND SHARP EDGES.

3. FINISH:  
 ANODIZE PER MIL-A-8625C,  
 TYPE II, CLASS 2, FLAT BLACK EXCEPT INDICATED AREAS  
 FINISH: CHEM FILM PER MIL-C-5541,  
 CLASS 3, (YELLOW).

4. DIMENSIONS APPLY AFTER FINISH.

5. RE-TAP ALL THREADED HOLES AFTER ANODIZING.

6. ANY INSIDE CORNER RADIUS NOT SPECIFIED IS R.094.

7. BLEND ALL RADII WITH ADJACENT RADII AND WITH ADJACENT SURFACES. NO STEP OR TOOL MARKS EXCEEDING SURFACE FINISH TOLERANCE PERMITTED.

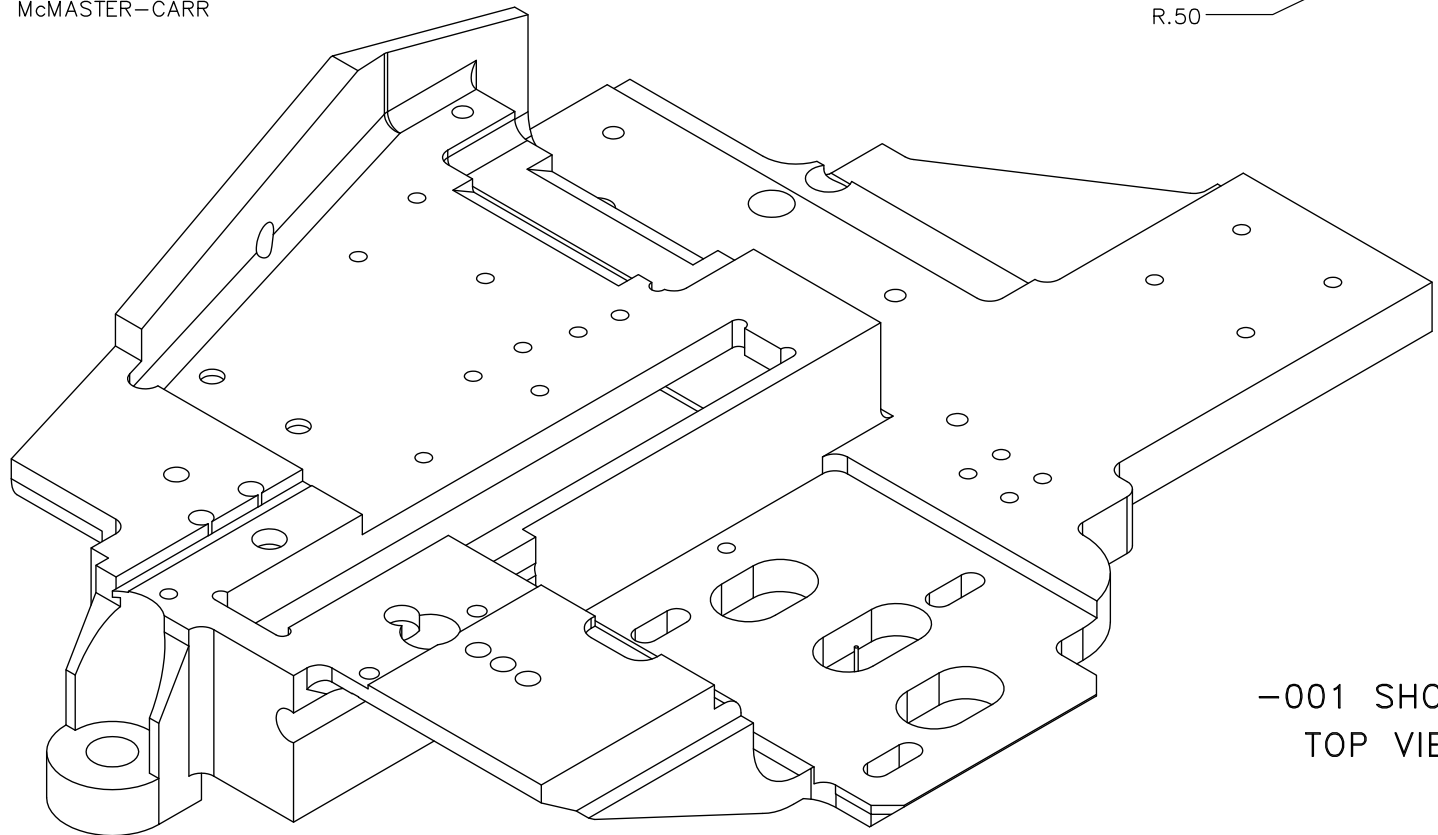
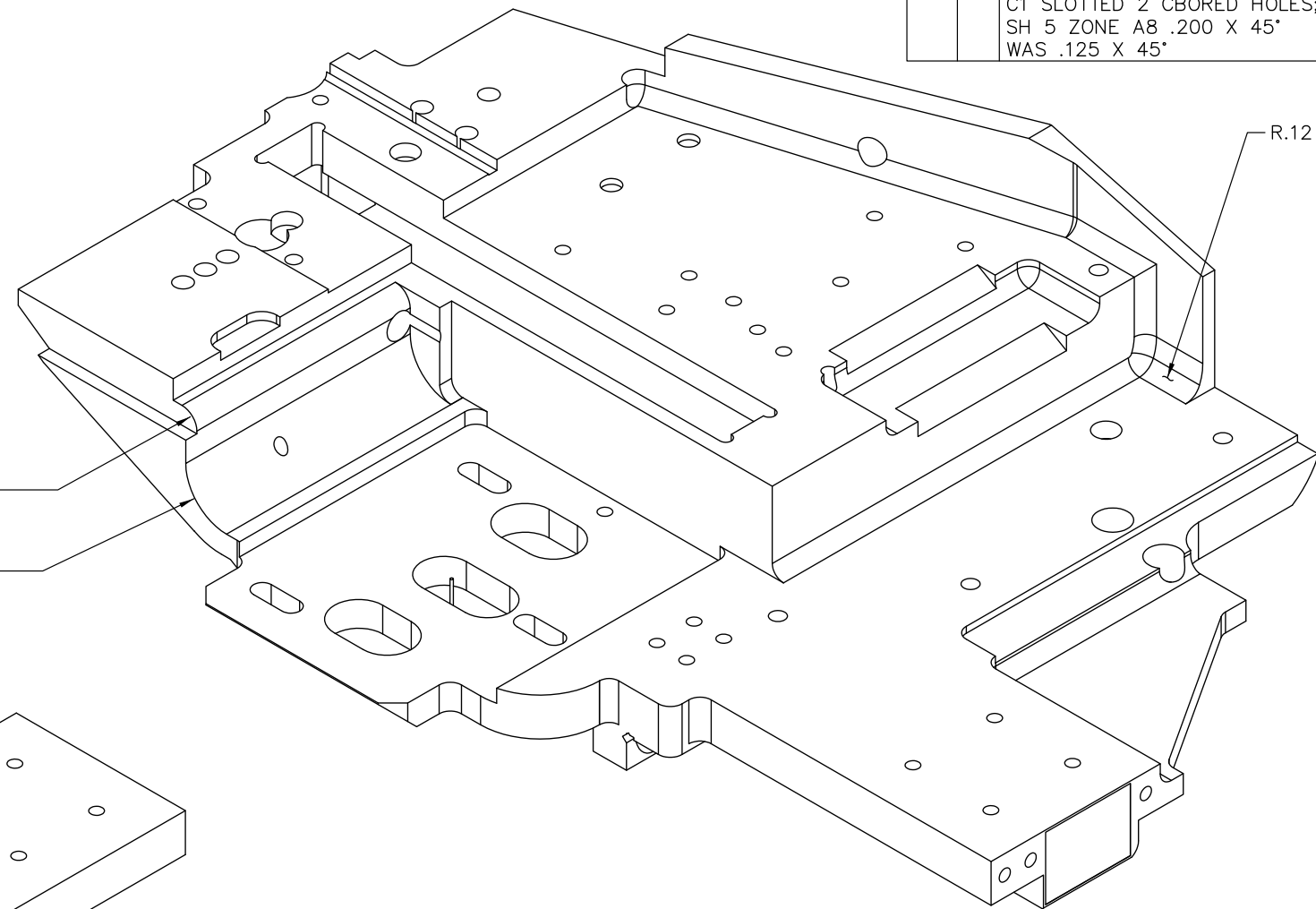
8. SPIRALOCK

9. McMASTER-CARR

X4	SHT 6 ZONE C1 DELETED 2 SLOTS; REPOSITIONED 2 CBORED HOLES	12/08-06
X5	SHT 5 ZONE A7 ADDED .500 X .150 NOTCH	12/08-06
A	RELEASED DRAWING	12/22/06

REVISIONS CONTINUED ON SHEET 2

REVISIONS				
ZONE	REV	DESCRIPTION	DATE	APVD
	X1	UPDATE PER DEVELOPMENTS	10/23/06	
	X2	SH 6 ZN A2 6.810 WAS 6.848	11/01/06	
	X3	SHT 5 ZONE D6 ADDED 2X Ø.188 X .10 DEEP; SHT 6 ZONE C1 SLOTTED 2 CBORED HOLES; SH 5 ZONE A8 .200 X 45° WAS .125 X 45°	12/09/06	



-001 SHOWN TOP VIEWS

QTY	ITEM	SIZE	DRAWING/PART NUMBER	NOMENCLATURE / DESCRIPTION / MATERIAL
1	3		98380A503	DOWEL, .1876-.1878 DIA X .375 LG, SST
2	2		96001	WIRE INSERT, 8-32 X .240 LG, SST
1	1		-001	PLATE, 2.00 THK, 6061-T6 AL ALY
			-501	BASEPLATE, SENSOR
501				

QUANTITY REQ'D PER DASH NO.		PARTS LIST	
DO NOT SCALE DRAWING UNLESS OTHERWISE SPECIFIED DIMENSIONS ARE IN INCHES TOLERANCES: .x ± .1 .xx ± .02 .xxx ± .005 HOLE DIA UP TO .500 ± .005 HOLE DIA ABOVE .500 ± .013 ANGLES ± 0° 30' MACHINED SURFACES ✓		TITLE <b>BASEPLATE,</b>	
PROJECT MANAGER	APPROVED	CAD/CAM DRAWING DO NOT MANUALLY REVISE OR UPDATE	SIZE
PROJECT ENGINEER	APPROVED G.A.		D
APPROVED SAFETY	CHECKED BY	SCALE	FSCM
APPROVED Q.A.	DRAWN BY	SCALE	DRAWING NUMBER
NEXT ASSEMBLY	USED ON	SCALE	DWGNO. R
APPLICATION	DATE: 08/26/06	SCALE	REV LTR
		SCALE	RELEASE DATE
		SCALE	SHEET 1 OF #

8

7

6

5

4

3

DWG NO SH 2 OF 10

1

D

D

C

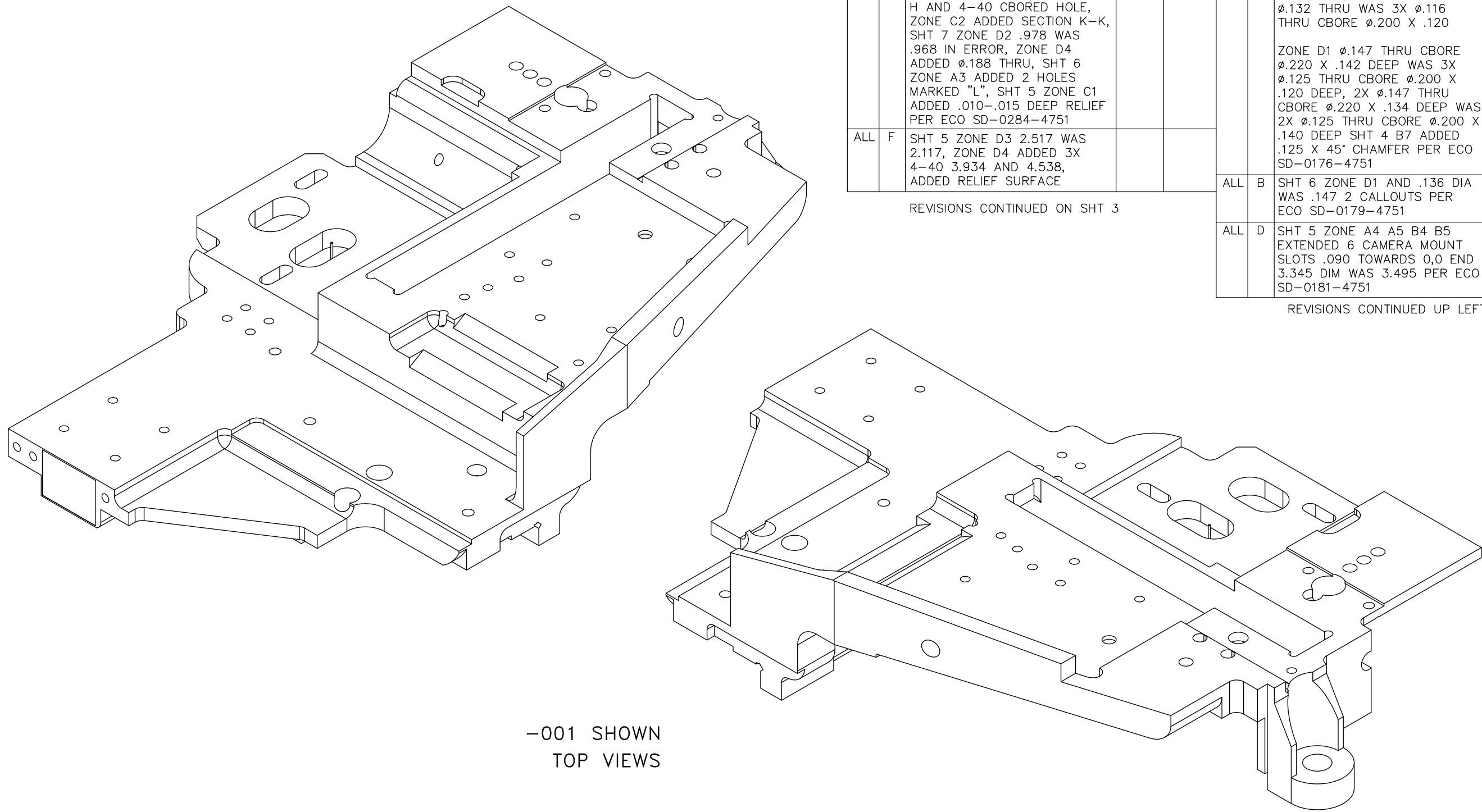
C

B

B

A

A



-001 SHOWN  
TOP VIEWS

ALL	E	SHT 5 ZONE C2 2X .765 WAS 2X .890, 2X 2.015 WAS 2X 1.890, ZONE B1 6X #4-40 WAS 4X, ZONE B7 .767 WAS .757, SHT 9 ZONE A2 ADDED DETAIL H AND 4-40 CBORED HOLE, ZONE C2 ADDED SECTION K-K, SHT 7 ZONE D2 .978 WAS .968 IN ERROR, ZONE D4 ADDED $\phi$ .188 THRU, SHT 6 ZONE A3 ADDED 2 HOLES MARKED "L", SHT 5 ZONE C1 ADDED .010-.015 DEEP RELIEF PER ECO SD-0284-4751
ALL	F	SHT 5 ZONE D3 2.517 WAS 2.117, ZONE D4 ADDED 3X 4-40 3.934 AND 4.538, ADDED RELIEF SURFACE

REVISIONS CONTINUED ON SHT 3

REVISIONS				
ZONE	REV	DESCRIPTION	DATE	APVD
ALL	B	SHT 5 ZONE A4 3.495 WAS 3.561, SH 6 ZONE C6 3.365 WAS 3.511, SHT 6 ZONE B1 3X $\phi$ .132 THRU WAS 3X $\phi$ .116 THRU CBORE $\phi$ .200 X .120  ZONE D1 $\phi$ .147 THRU CBORE $\phi$ .220 X .142 DEEP WAS 3X $\phi$ .125 THRU CBORE $\phi$ .200 X .120 DEEP, 2X $\phi$ .147 THRU CBORE $\phi$ .220 X .134 DEEP WAS 2X $\phi$ .125 THRU CBORE $\phi$ .200 X .140 DEEP SHT 4 B7 ADDED .125 X 45° CHAMFER PER ECO SD-0176-4751		
ALL	B	SHT 6 ZONE D1 AND .136 DIA WAS .147 2 CALLOUTS PER ECO SD-0179-4751		
ALL	D	SHT 5 ZONE A4 A5 B4 B5 EXTENDED 6 CAMERA MOUNT SLOTS .090 TOWARDS 0,0 END 3.345 DIM WAS 3.495 PER ECO SD-0181-4751		

REVISIONS CONTINUED UP LEFT

SEE SHEET 1 FOR NOTES.

SIZE D	CAGE CODE	DRAWING NUMBER	REV LTR K
SCALE 2/1	RELEASE DATE	SHEET 2	OF 10

8

7

6

5

4

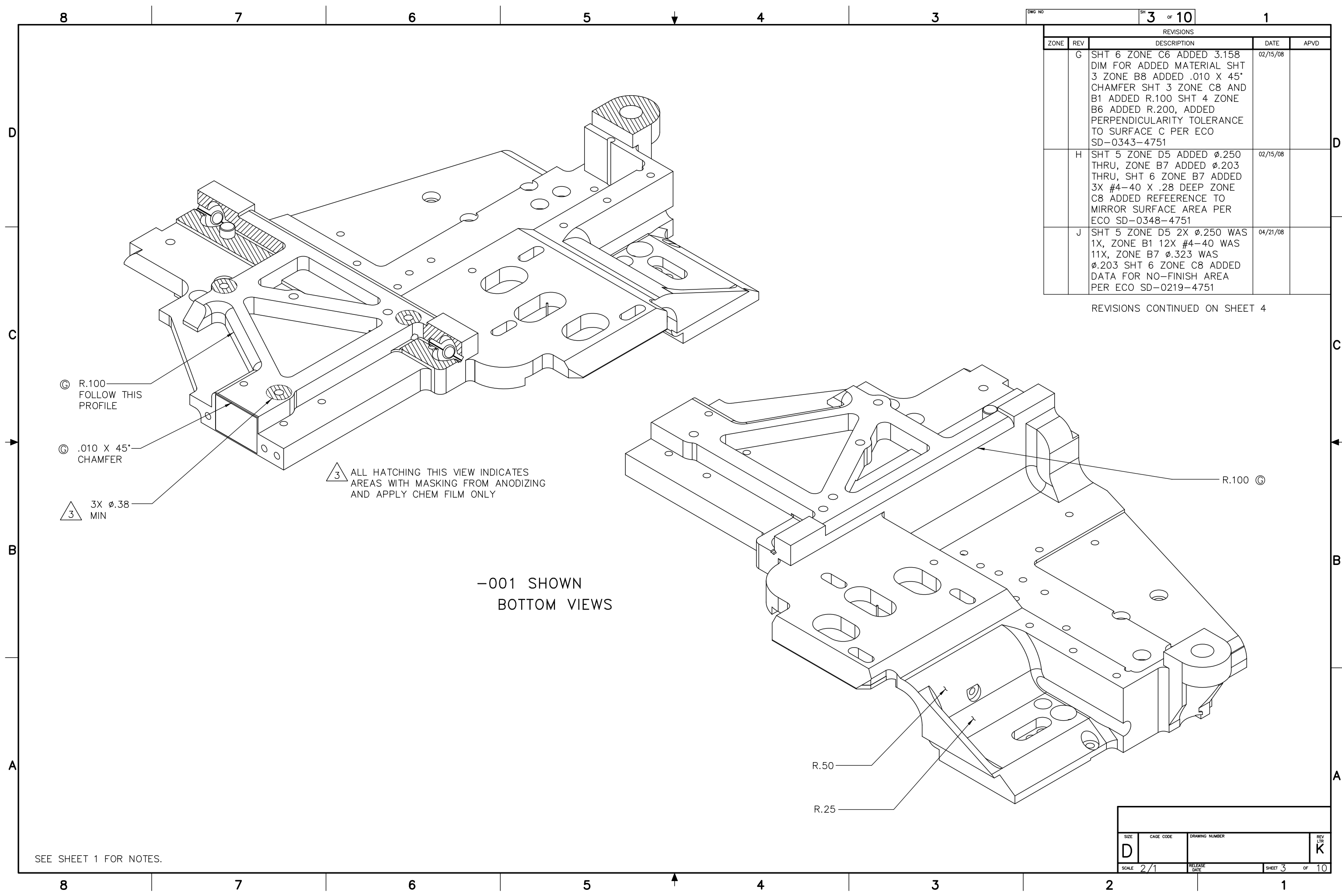
3

2

1

REVISIONS				
ZONE	REV	DESCRIPTION	DATE	APVD
	G	SHT 6 ZONE C6 ADDED 3.158 DIM FOR ADDED MATERIAL SHT 3 ZONE B8 ADDED .010 X 45° CHAMFER SHT 3 ZONE C8 AND B1 ADDED R.100 SHT 4 ZONE B6 ADDED R.200, ADDED PERPENDICULARITY TOLERANCE TO SURFACE C PER ECO SD-0343-4751	02/15/08	
	H	SHT 5 ZONE D5 ADDED $\phi$ .250 THRU, ZONE B7 ADDED $\phi$ .203 THRU, SHT 6 ZONE B7 ADDED 3X #4-40 X .28 DEEP ZONE C8 ADDED REFERENCE TO MIRROR SURFACE AREA PER ECO SD-0348-4751	02/15/08	
	J	SHT 5 ZONE D5 2X $\phi$ .250 WAS 1X, ZONE B1 12X #4-40 WAS 11X, ZONE B7 $\phi$ .323 WAS $\phi$ .203 SHT 6 ZONE C8 ADDED DATA FOR NO-FINISH AREA PER ECO SD-0219-4751	04/21/08	

REVISIONS CONTINUED ON SHEET 4



-001 SHOWN  
BOTTOM VIEWS

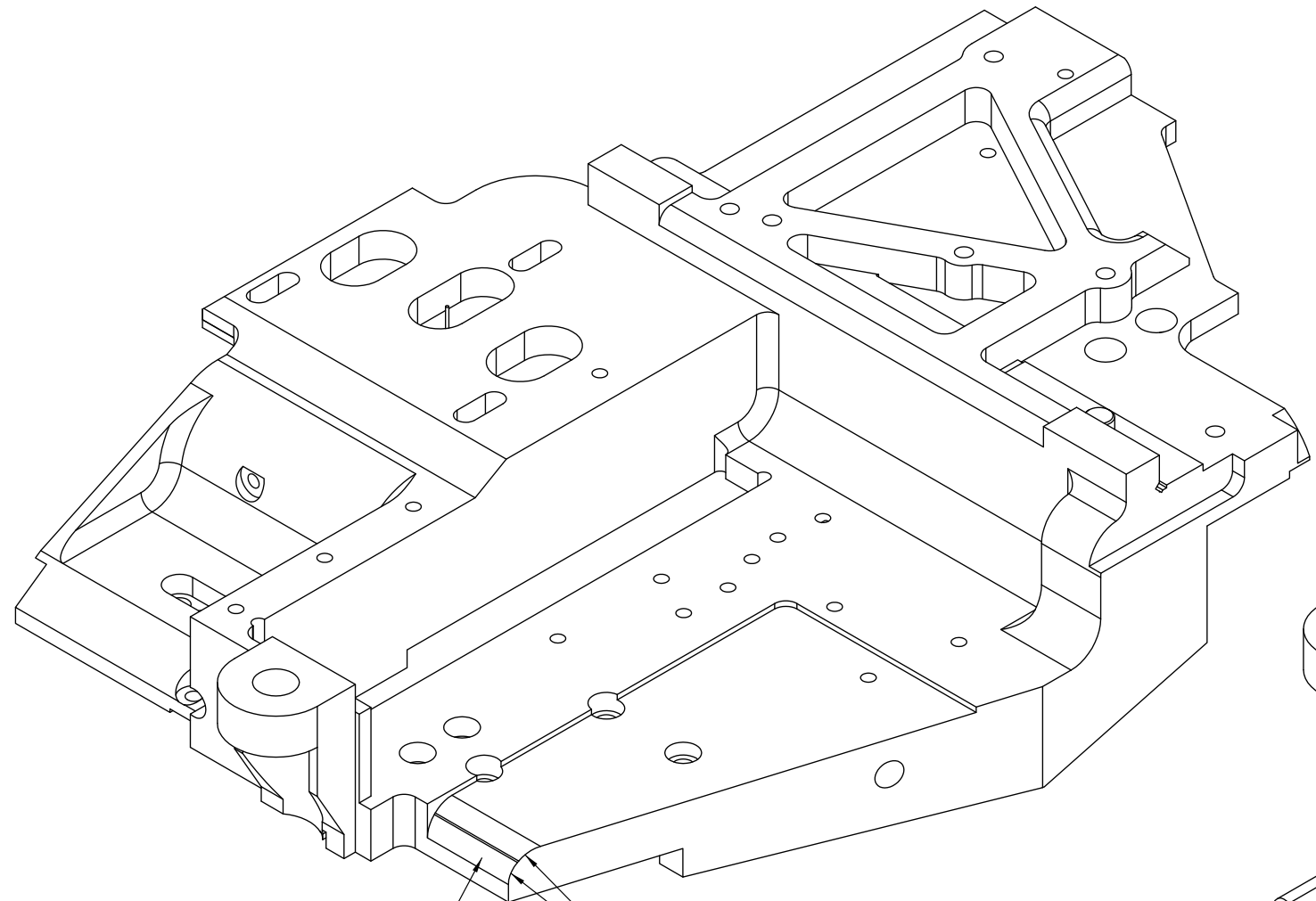
SEE SHEET 1 FOR NOTES.

SIZE D	CAGE CODE	DRAWING NUMBER	REV LTR K
SCALE 2/1	RELEASE DATE	SHEET 3	OF 10

REVISIONS				
ZONE	REV	DESCRIPTION	DATE	APVD
	K	SHT 5 ZONE B7 3X .147 +.003/- .002 WAS .188 SHT 5 ZONE B5 TO ZONE C5 MOVED 3 "F" HOLES, BOSSED, RIBS AND FILLETS .150 TO RIGHT TO MOVE LASER INBOARD ON BASEPLATE, ADDED 2X .060 W X .020 DEEP RELIEF GROOVE SHOWN IN DETAIL L SHEET 5, ADDED DETAIL L, SHT 6 ZONE B6 6-32 THRU WAS .23 DEEP PER ECO SD-0608-4751	03/10/09	

D  
C  
B  
A

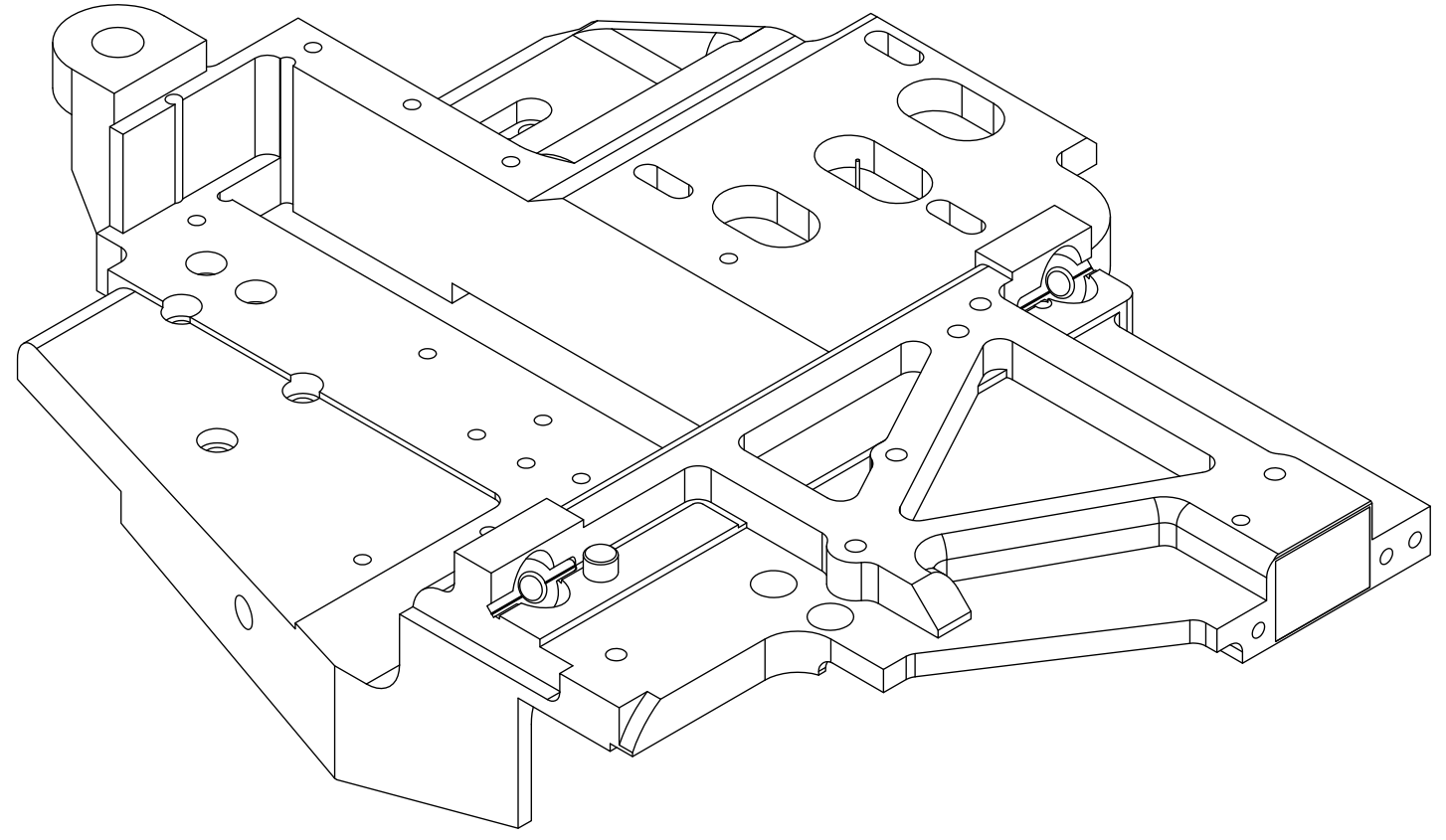
D  
C  
B  
A



.125 X 45°  
CHAMFER

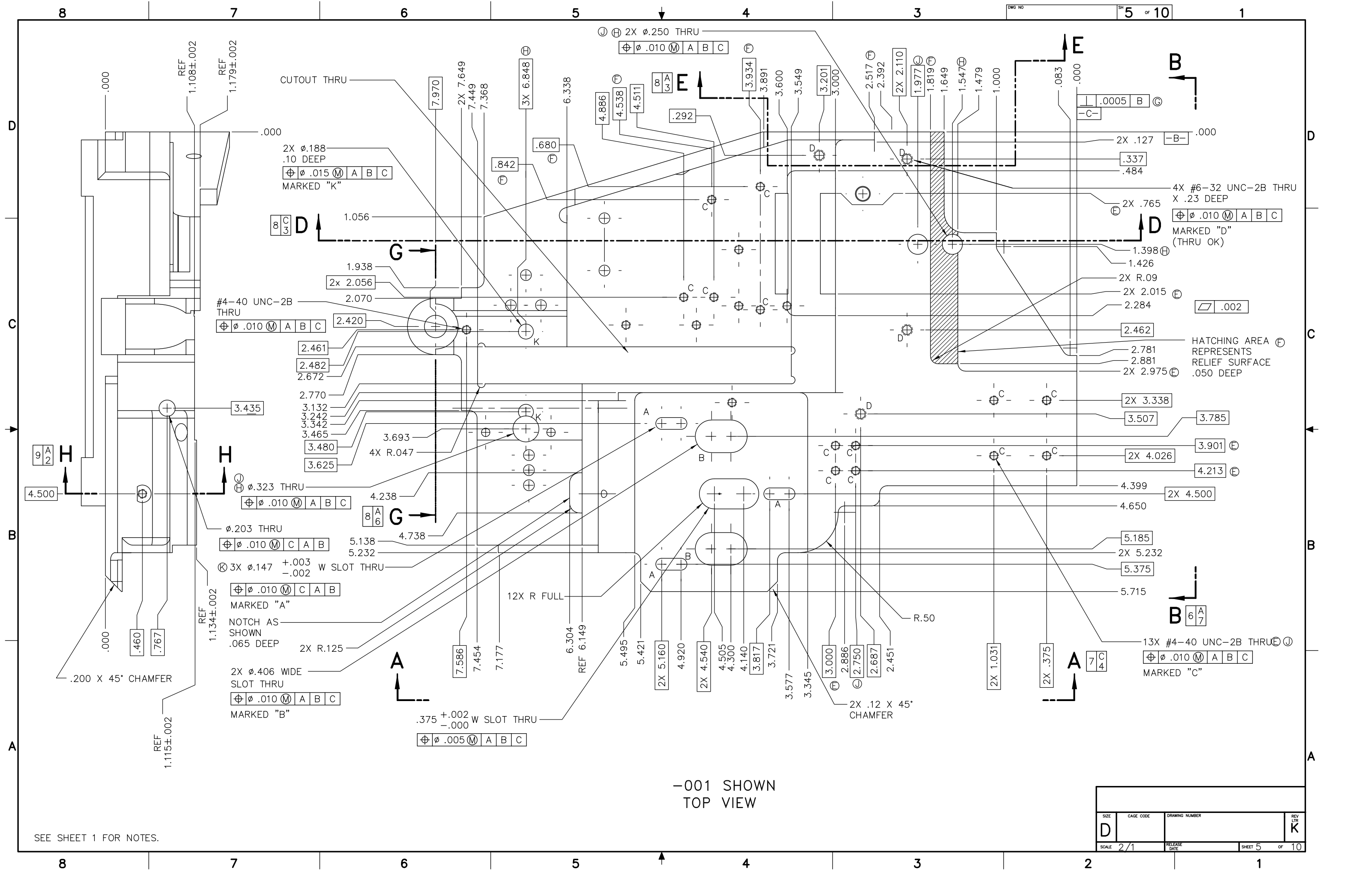
R.200 Ⓞ

-001 SHOWN  
BOTTOM VIEWS



SEE SHEET 1 FOR NOTES.

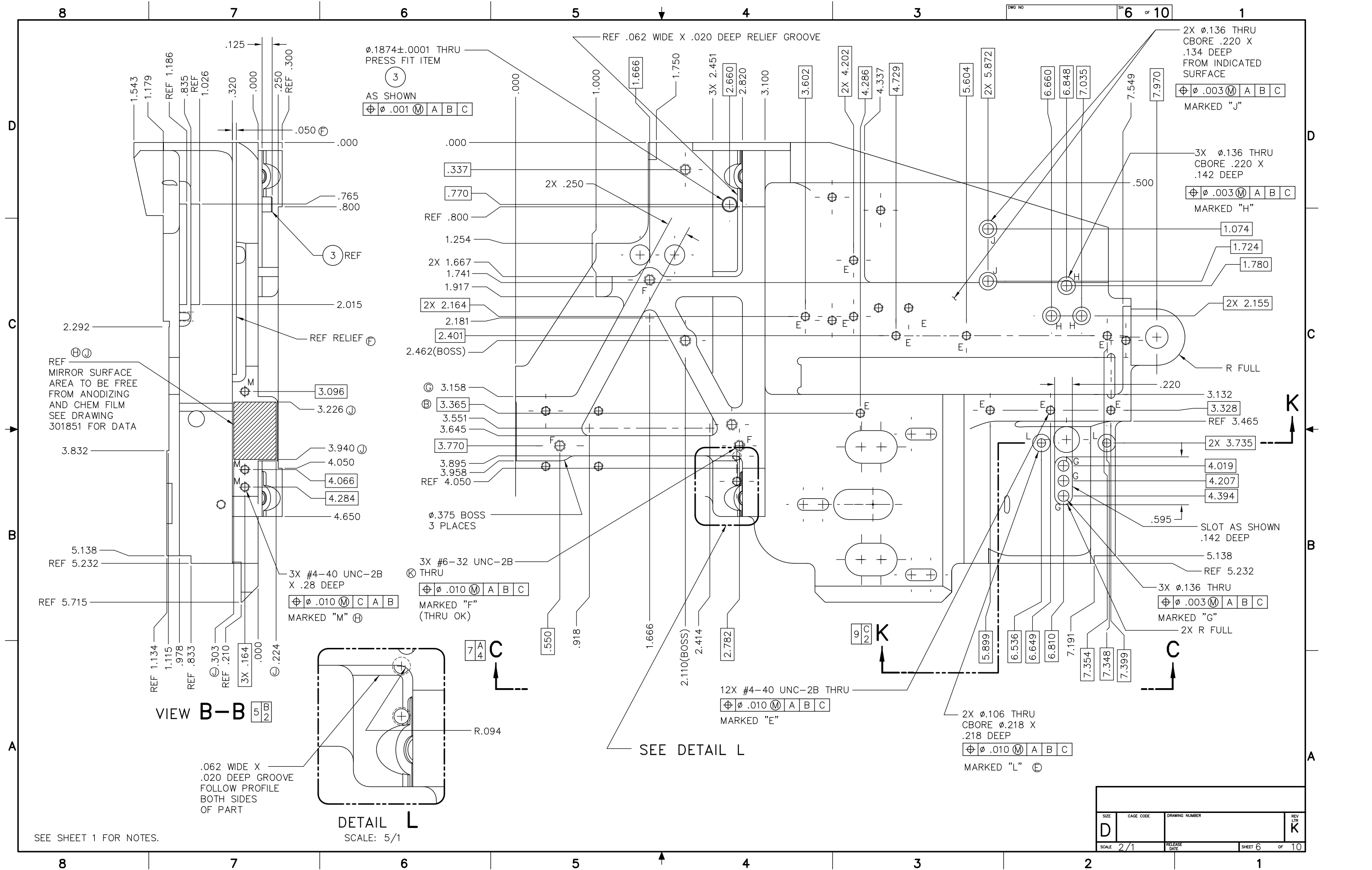
SIZE D	CAGE CODE	DRAWING NUMBER	REV LTR K
SCALE 2/1	RELEASE DATE	SHEET 4	OF 10



-001 SHOWN TOP VIEW

SEE SHEET 1 FOR NOTES.

SIZE D	CAGE CODE	DRAWING NUMBER	REV LTR K
SCALE 2/1	RELEASE DATE	SHEET 5	OF 10

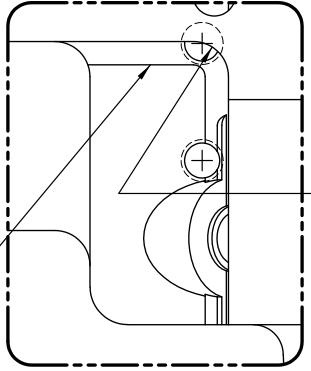


D  
C  
B  
A

D  
C  
B  
A

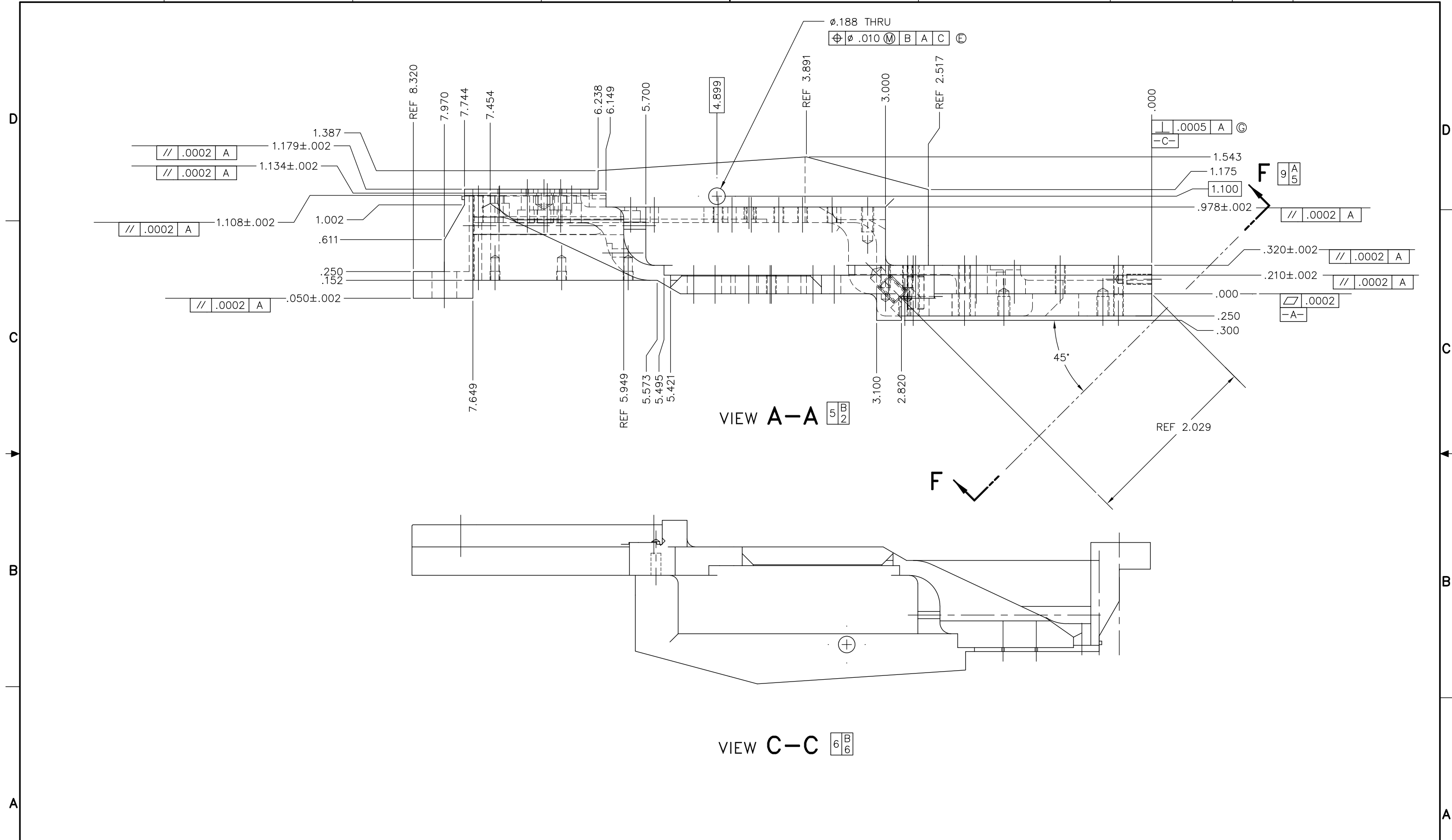
SEE SHEET 1 FOR NOTES.

VIEW B-B



DETAIL L  
SCALE: 5/1

SIZE D	CAGE CODE	DRAWING NUMBER	REV LIT K
SCALE 2/1	RELEASE DATE	SHEET 6	OF 10

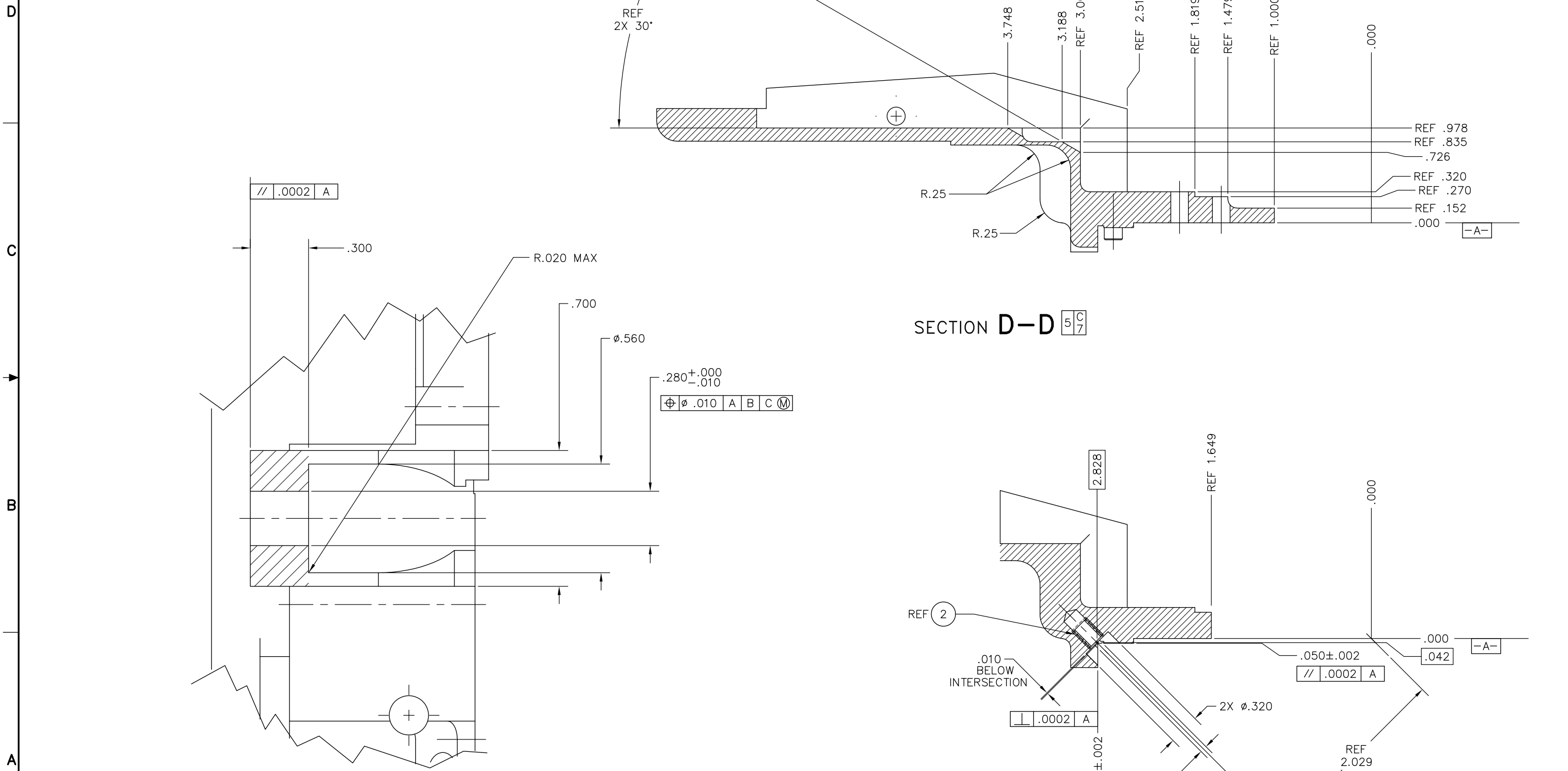


VIEW A-A 5 B 2

VIEW C-C 6 B 6

SEE SHEET 1 FOR NOTES.

SIZE	CAGE CODE	DRAWING NUMBER	REV
D			K
SCALE	2/1	RELEASE DATE	SHEET 7 OF 10



SECTION G-G 6 B / 6  
SCALE: 1/1

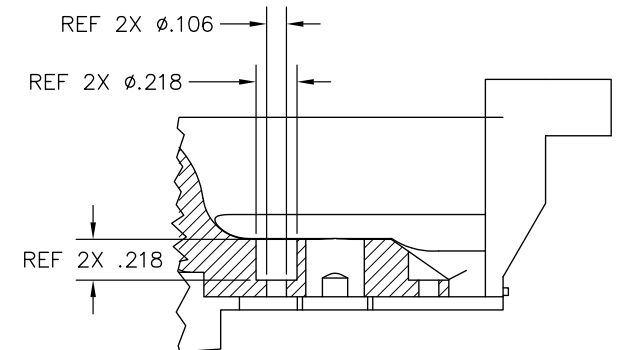
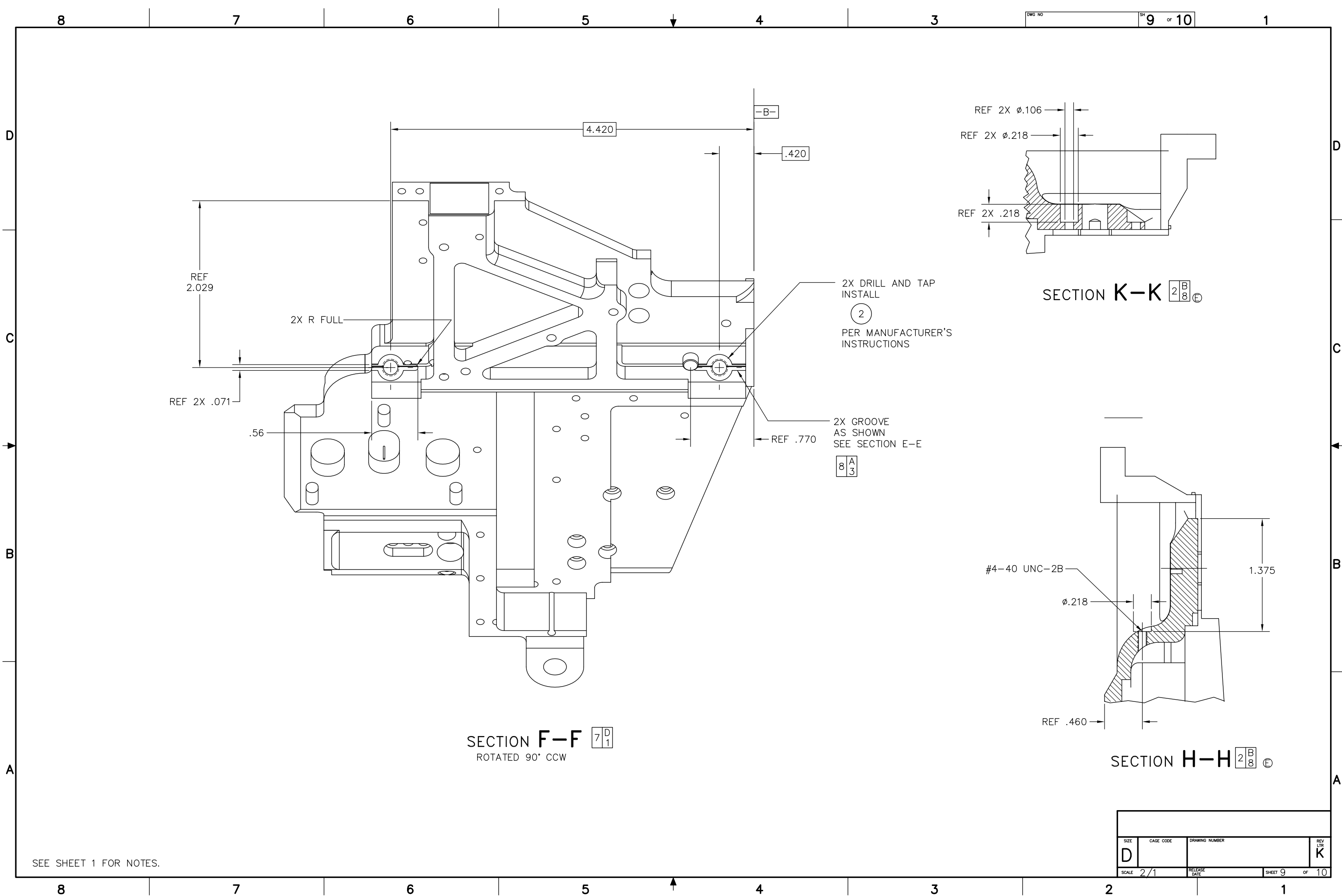
SECTION D-D 5 C / 7

SECTION E-E 5 D / 4  
TYP 2 PLACES

SEE SHEET 1 FOR NOTES.

SIZE D	CAGE CODE	DRAWING NUMBER	REV LTR K
SCALE 2/1	RELEASE DATE	SHEET 8	OF 10

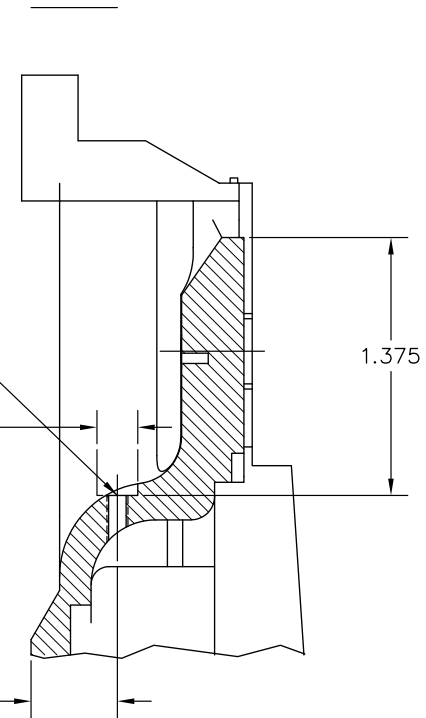




SECTION K-K 2 B 8 E

2X DRILL AND TAP  
INSTALL  
2  
PER MANUFACTURER'S  
INSTRUCTIONS

2X GROOVE  
AS SHOWN  
SEE SECTION E-E  
8 A 3

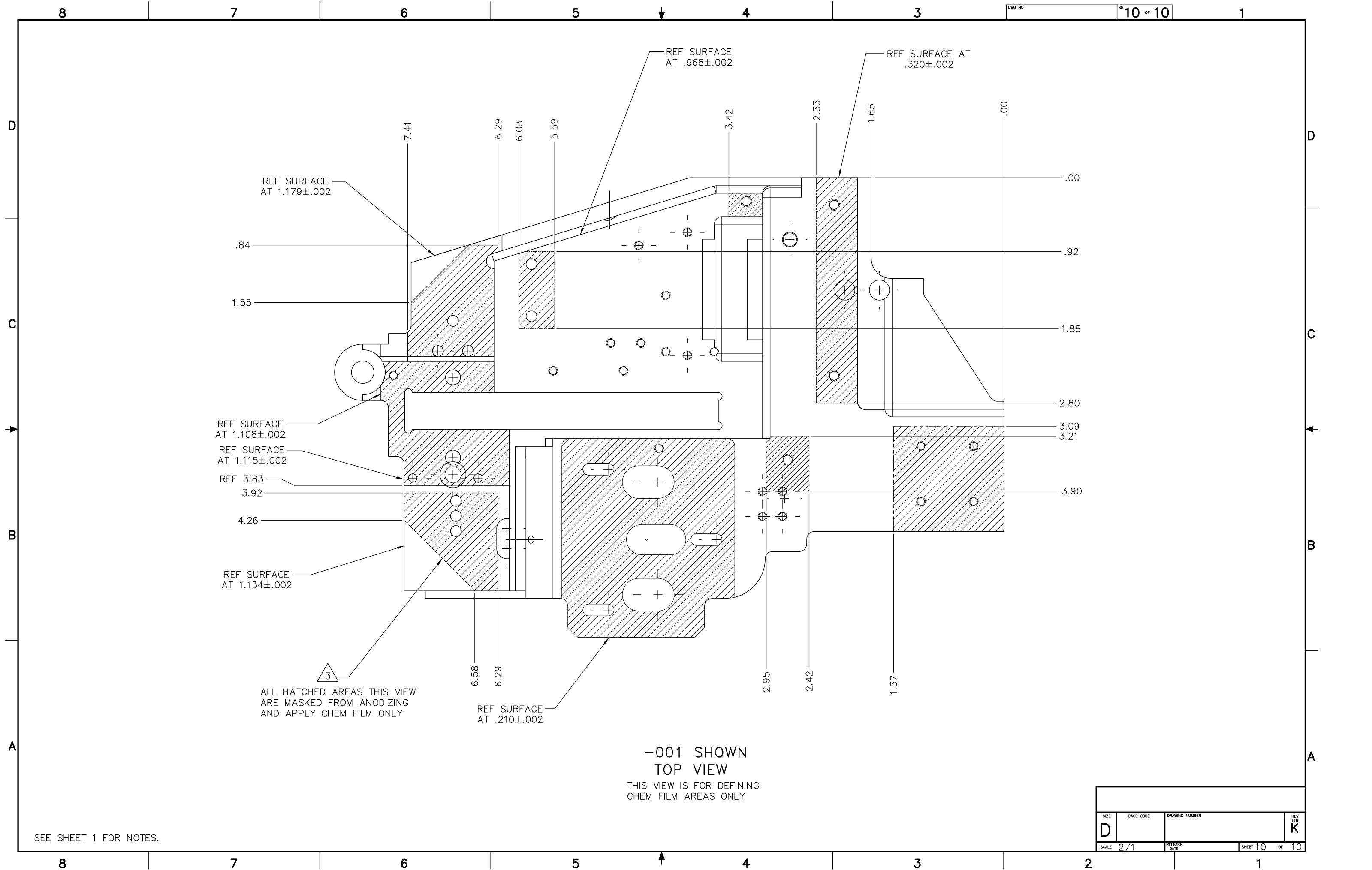


SECTION H-H 2 B 8 E

SECTION F-F 7 D 1  
ROTATED 90° CCW

SEE SHEET 1 FOR NOTES.

SIZE D	CAGE CODE	DRAWING NUMBER	REV LTR K
SCALE 2/1	RELEASE DATE	SHEET 9	OF 10



-001 SHOWN  
 TOP VIEW  
 THIS VIEW IS FOR DEFINING  
 CHEM FILM AREAS ONLY

SEE SHEET 1 FOR NOTES.

SIZE	CAGE CODE	DRAWING NUMBER	REV LTR
D			K
SCALE	2/1	RELEASE DATE	SHEET 10 OF 10